

PIN 004950.00

F.H.W.A. REL. NO.	STATE	PROJECT NUMBER	SHEET NO.	TOTAL SHEETS
1	MAINE	10-10-95-71.118.1127	10	28

ESTIMATED QUANTITIES

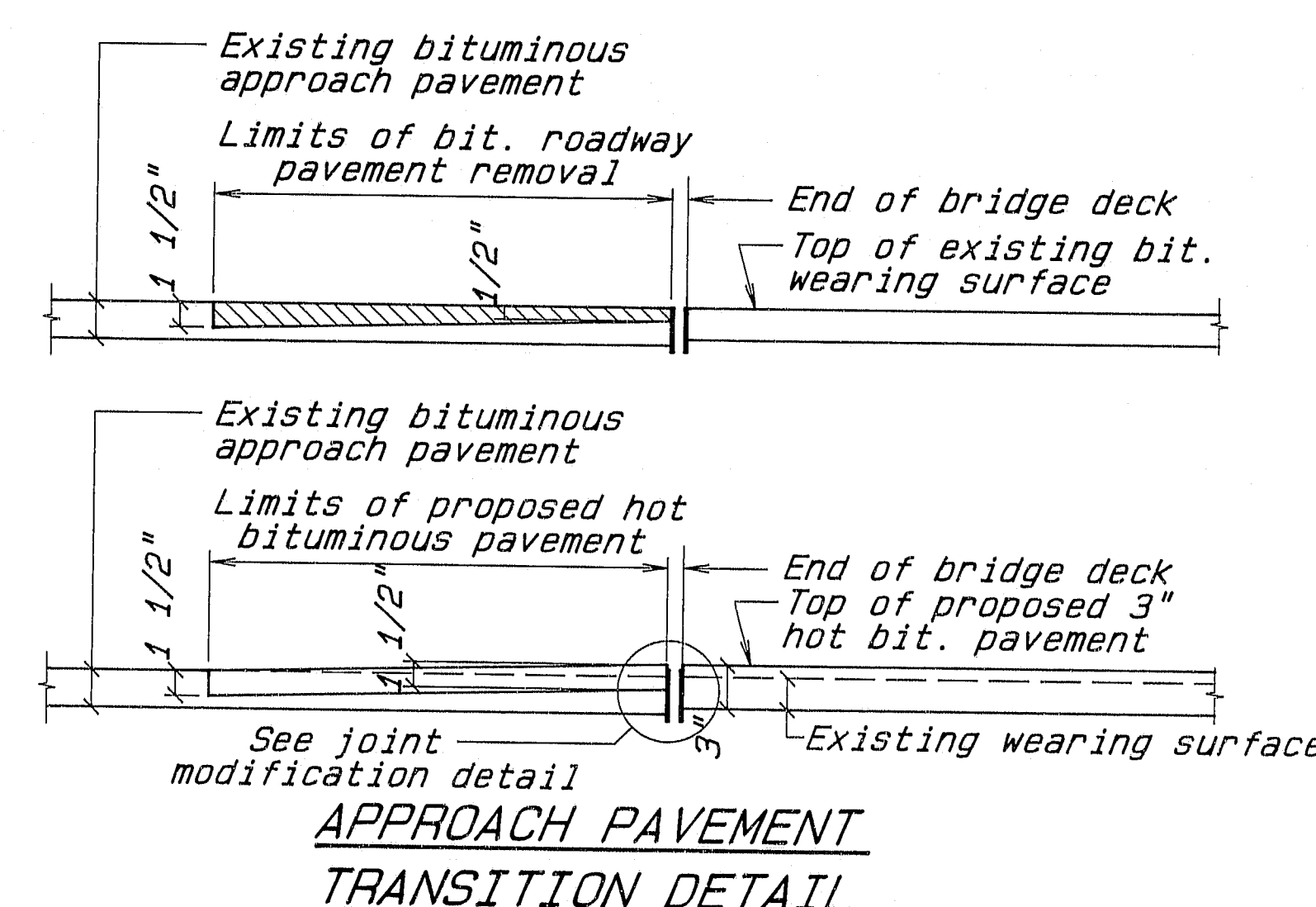
ITEM NO.	DESCRIPTION	QUANTITY			UNIT
		Northbound	Southbound	TOTAL	
202.127	Removing of Existing Bituminous Pavement	0.05	0.05	0.10	LS
202.128	Removing of Existing Concrete-Curbs & Sidewalks	0.04	0.04	0.08	LS
202.203	Pavement Butt Joints	667	667	1334	SY
403.10	Hot Bituminous Pavement, Grading D	170	172	342	TON
409.15	Bituminous Tack Coat, Applied	33	33	66	GAL
508.13	Membrane Waterproofing	0.05	0.05	0.10	LS
514.06	Curing Box for Concrete Cylinders	0.13	0.12	0.25	EA
518.30	Rehab of Structural Concrete Slab-to Reinf. Steel	125	130	255	SF
518.31	Rehab of Structural Concrete Slab-to below Reinf. Steel	65	65	130	SF
518.39	Repairing Granite Curb Bedding Mortar	80	80	160	LF
520.241	Bridge Joint Modification - Type I	2	2	4	EA
526.301	Temporary Concrete Barrier-Type I	0.08	0.08	0.16	LS
527.32	Portable Crash Barrels	8	8	16	EA
606.173	Bridge Connections	2	2	4	EA
606.25	Terminal Connector	4	4	8	EA
606.364	Guard Rail, Remove, Modify and Reset, Type 3b	100	100	200	LF
627.611	6 Inch Solid White Pavement Marking Line	200	200	400	LF
627.621	6 Inch Broken White Pavement Marking Line	950	950	1900	LF
627.631	6 Inch Solid Yellow Pavement Marking Line	200	200	400	LF
627.67	Removing Pavement Markings	100	100	200	SF
627.691	Tem 6" Plastic Pave Marking Line, Yellow or White	2200	2200	4400	LF
639.18	Field Office Type "A"	0.10	0.10	0.20	EA
639.22	Testing Facilities Bituminous Mixes	0.05	0.05	0.10	LS
639.23	Testing Facilities Concrete	0.13	0.12	0.25	LS
652.31	Type I Barricade	13	13	26	EA
652.33	Drum	2	2	4	EA
652.34	Cone	5	5	10	EA
652.35	Construction Signs	50	50	100	SF
652.361	Maintenance of Traffic Control Devices	0.07	0.07	0.14	LS
652.38	Flagger	50	50	100	MH
659.10	Mobilization	0.10	0.10	0.20	LS

ESTIMATE OF LUMP SUM QUANTITIES

202.127	Removing of Existing Bituminous Pavement	715	695	1410	SY
508.13	Membrane Waterproofing	715	695	1410	SY

General Construction Notes:

- Reinforcing Steel shall have a 2 inch cover unless otherwise noted.
- Protective coating for concrete surfaces shall be applied to all exposed surfaces of new concrete. Payment shall be considered incidental to related contract items.
- The new end post stirrups detailed for the project shall be drilled and grouted by a method approved by the Engineer and shall meet in place proof load requirements for unconfined pull out of: #5 bar=11,300 pounds service load. Proof loading will be the responsibility of the Department and will be done at the discretion of the Engineer. Minimum set time for proof loading shall be specified by the Contractor. The minimum proof loading obtained will be 150% of service load. Payment for labor, materials and all incidentals required to complete this work shall be considered incidental to Item 606.173, Bridge Connection.
- Existing reinforcing steel to remain shall be cleaned as directed prior to placing new concrete.
- The existing concrete shall be removed so as not to damage existing vertical and horizontal steel in the parapets or the longitudinal and transverse reinforcing steel in the superstructure and abutment. Any damaged reinforcing steel shall be replaced at the Contractor's expense.
- The Contractor's operations shall be conducted such that traffic will not travel on an unsurfaced concrete deck at any time. Existing bituminous pavement shall be removed and new bituminous pavement shall be placed to facilitate this requirement.
- All utility facilities shall be adjusted by the respective utilities unless noted. Utilities: Central Maine Power, New England Telephone.
- The top of the concrete slab where concrete has been removed or rehabilitated shall be prepared to a suitable surface to receive the membrane waterproofing by a method approved by the Engineer. Payment for all labor, materials, and equipment will be incidental to related contract items.
- Concrete end posts, including removing existing end posts, parapets slab concrete, granite curbing, abutment concrete, bridge rail modifications; reinforcing steel, fabrication, delivery, and placement; silica fume additive; and all incidentals required to do the work will be considered incidental to Item 606.173, Bridge Connections.
- Payment for the terminal connectors, related hardware and installation will be made under Item 606.25 Terminal Connector.
- Any necessary adjustments to existing rail posts and the removal and replacement of curb concrete shall be as approved by the Engineer. Payment will be considered incidental to the appropriate Bridge Joint Modification Pay Items.
- Existing granite curb which requires removal in order to seal the expansion joints and install the end posts shall be carefully and neatly cut off as required. Concrete shall be placed to the limits shown on the plans. Payment will be considered incidental to related contract items.
- Dimensions shown are from existing plans and may differ from actual field dimensions. Field verify all dimensions prior to construction.



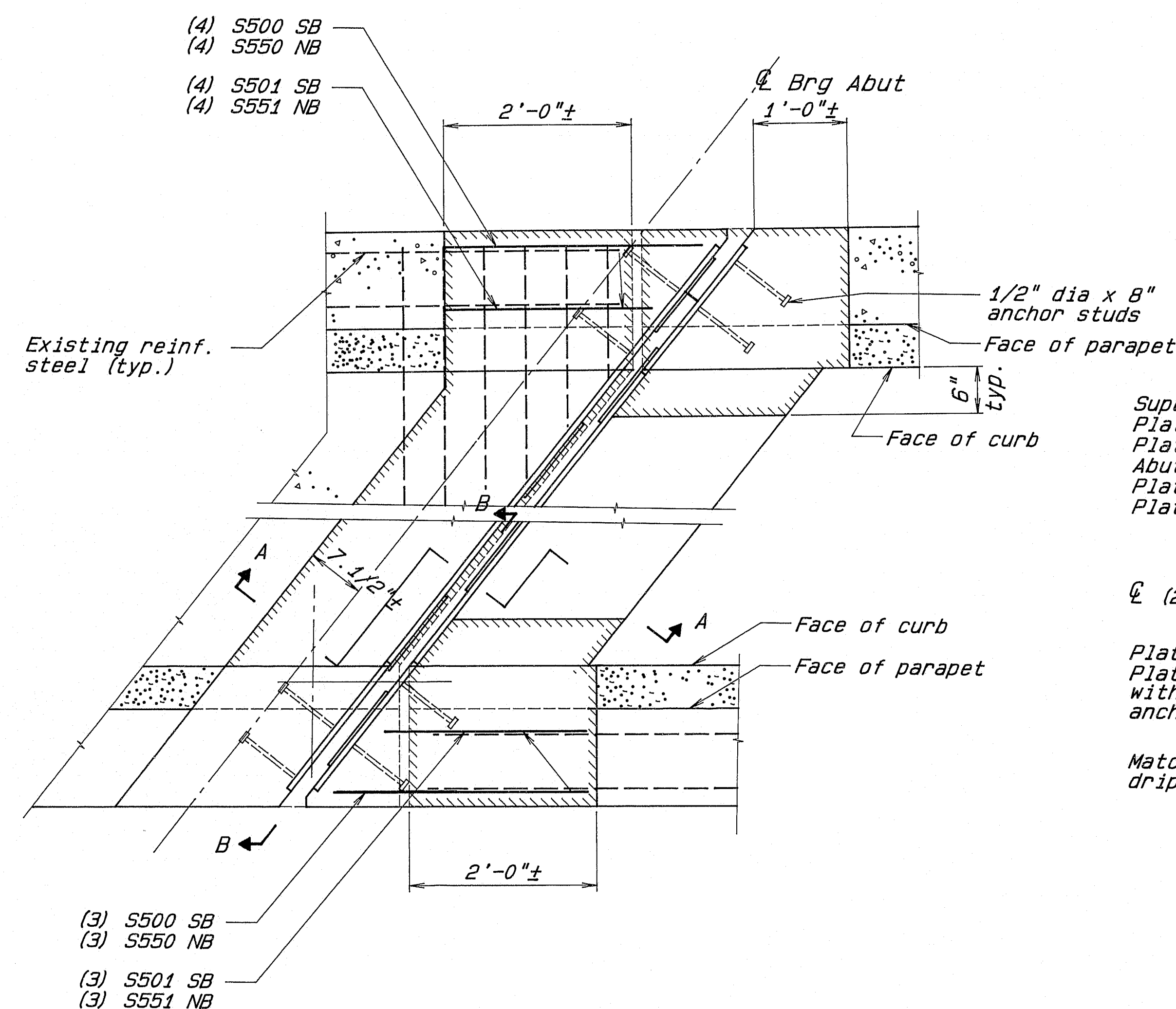
LEGEND

	Existing Concrete (to remain)
	New Concrete
	Existing Concrete (to be removed)
	Existing Granite (to remain)

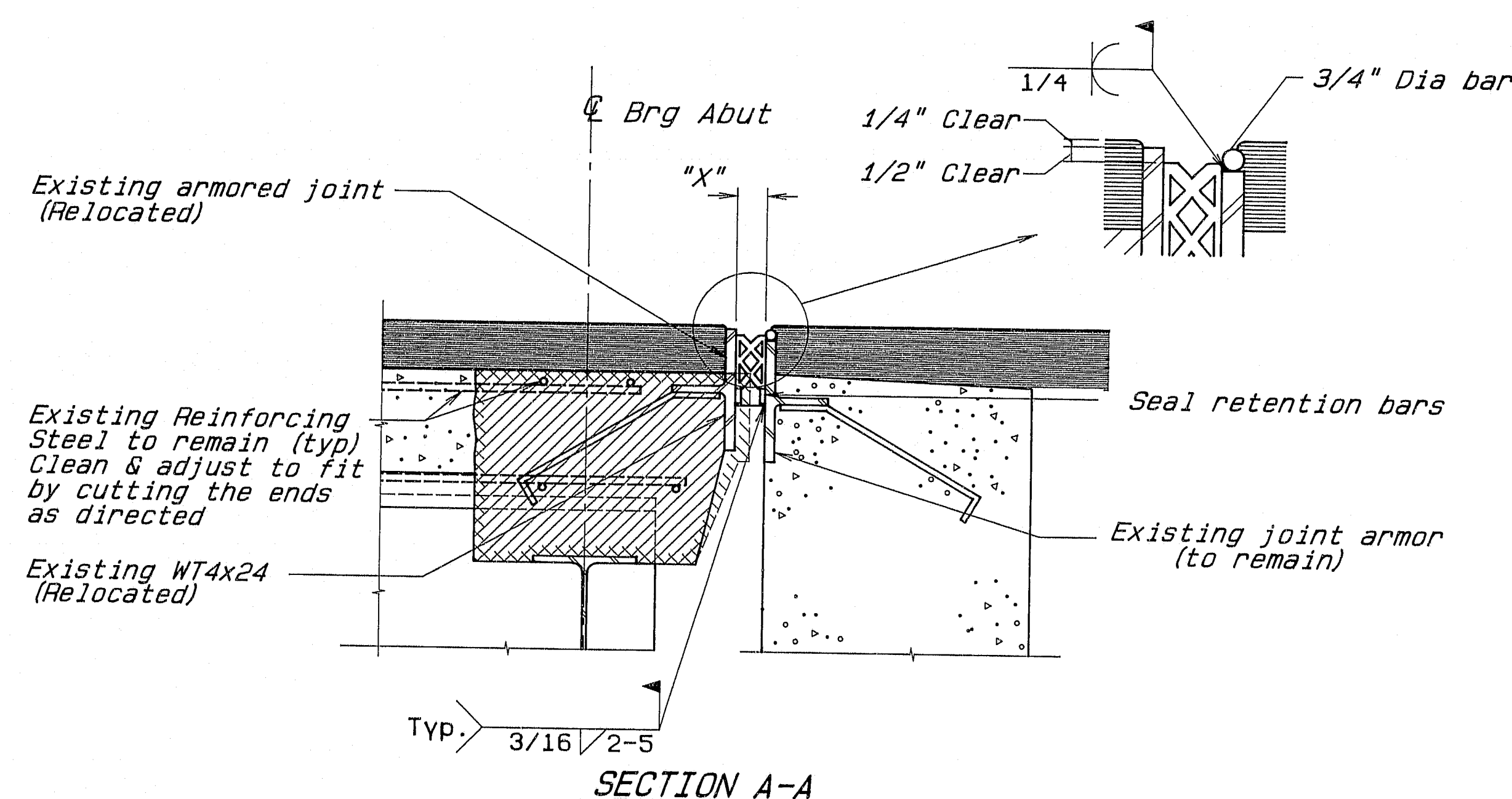
STATE OF MAINE DEPARTMENT OF TRANSPORTATION
WEARING SURFACE REPLACEMENT AT INTERSTATE 95 OVER RIVER ROAD IN THE TOWN OF BENTON KENNEBEC COUNTY
ESTIMATED QUANTITIES & GENERAL NOTES
SHEET 2 OF 4 AUGUSTA, MAINE MAY 1992

107-321

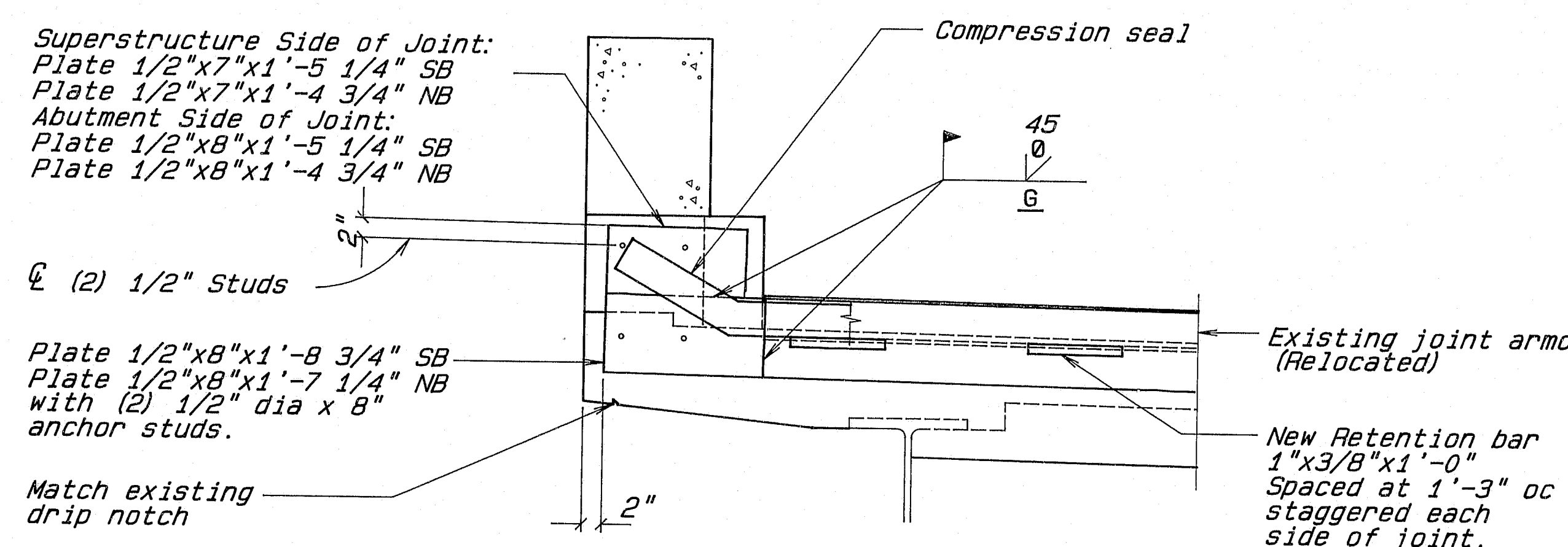
10



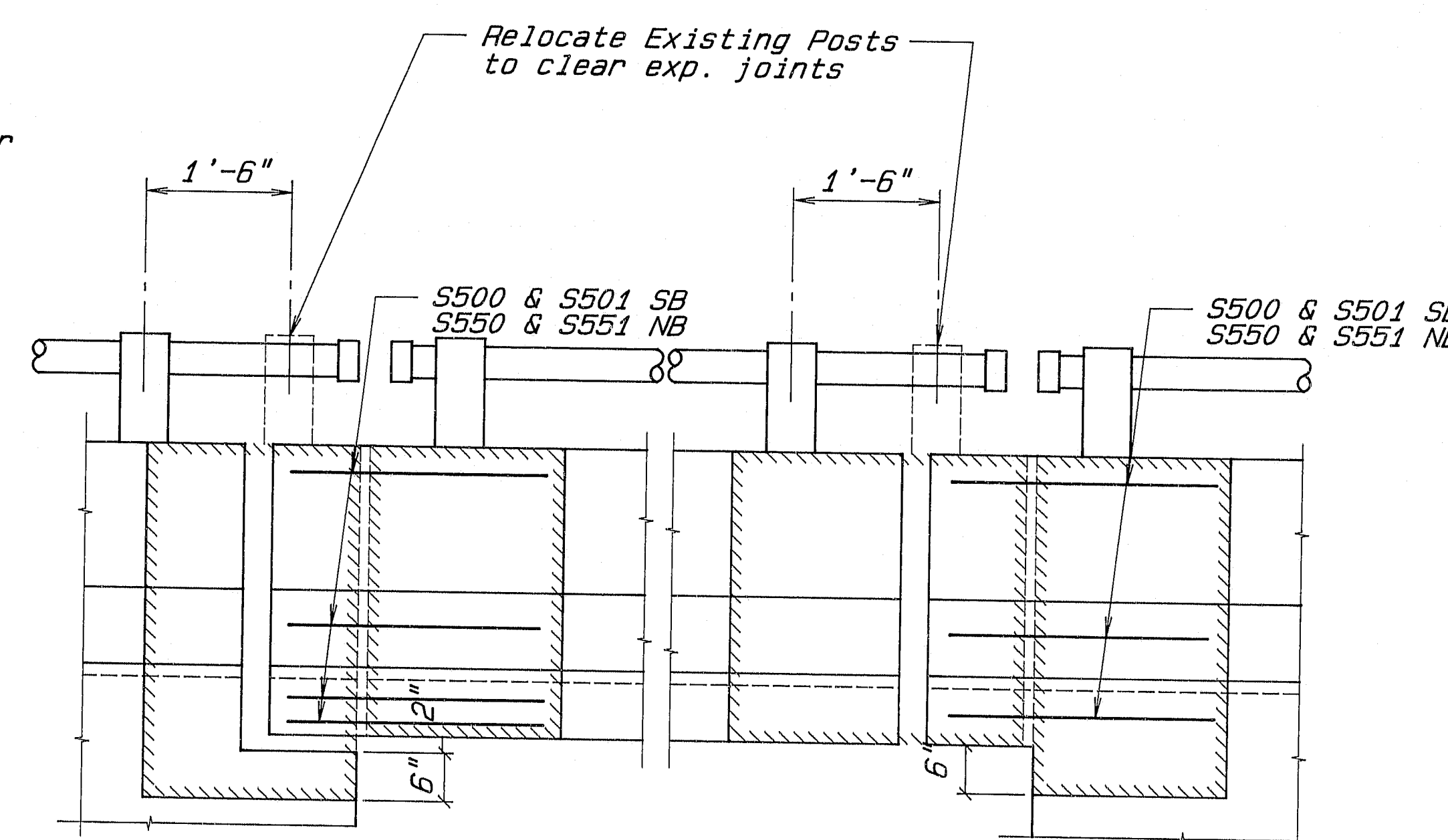
**BRIDGE JOINT MODIFICATION
TYPE I**
Abutments 1 & 2, NB & SB



SECTION A-A



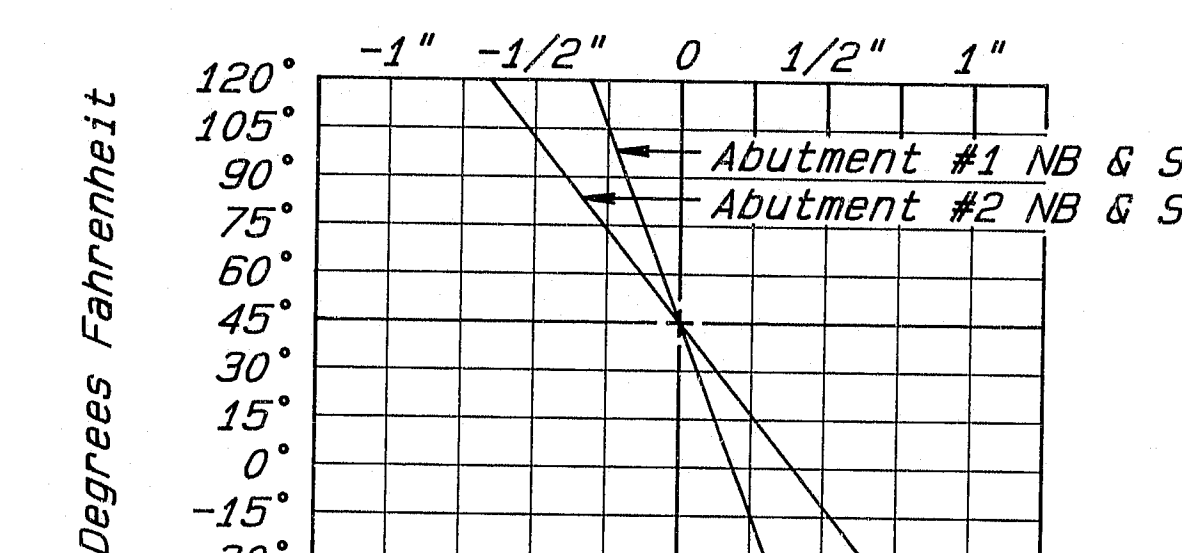
SECTION B-B



FASCIA ELEVATION

NOTES

1. Compression seals to be furnished shall have a minimum movement rating of 5/8" at Abut #1, and 1 3/8" at Abut #2, NB & SB.
2. The seal shall be approved by the Engineer prior to fabrication of the joint armor.
3. The joint opening "X" will vary depending on the dimensions of the seal selected by the Contractor. The joint opening shall be set according to the opening shown on the approved shop drawings.
4. Final adjustment for temperature shall be made in the field according to the "Seal Adjustment Chart". Adjustment shall be measured parallel to the centerline of construction.
5. Seals shall be installed in one continuous length. Splicing of the seal is not allowed. A temporary interruption of traffic is anticipated to facilitate the installation.
6. The upturned ends of the compression seals shall be sealed in a manner approved by the Engineer.



SEAL ADJUSTMENT CHART

STRAIGHT BARS			
Mark	Number	Length	Description
S500	14	2'-8"	Curbs-SB
S501	14	2'-2"	Curbs-SB
S550	14	2'-7"	Curbs-NB
S551	14	2'-2"	Curbs-NB

STATE OF MAINE
DEPARTMENT OF TRANSPORTATION
**WEARING SURFACE REPLACEMENT
AT
INTERSTATE 95
OVER RIVER ROAD
IN THE TOWN OF
BENTON
KENNEBEC COUNTY
JOINT DETAILS**

107-322